

Development by Design

Managing Development with Land Use and Transportation Planning

Board of Supervisor's Meeting

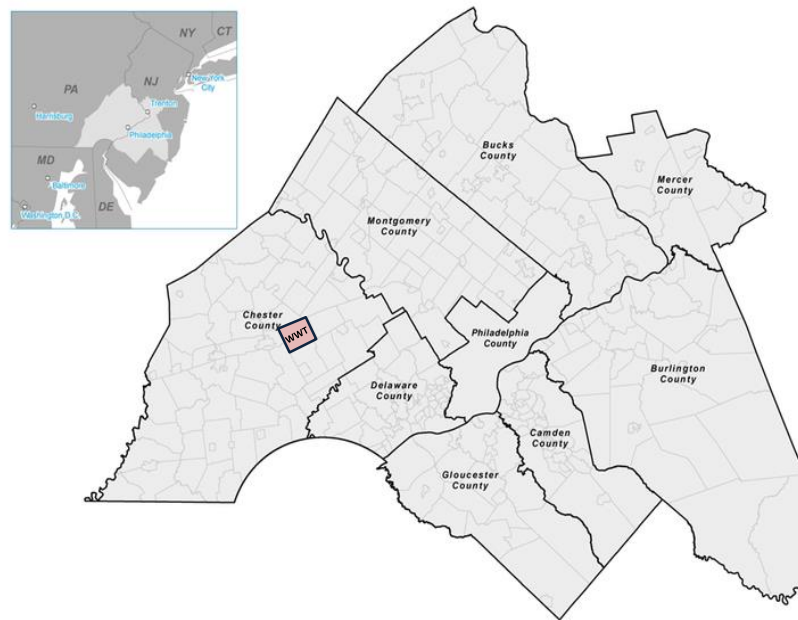
June 13, 2018



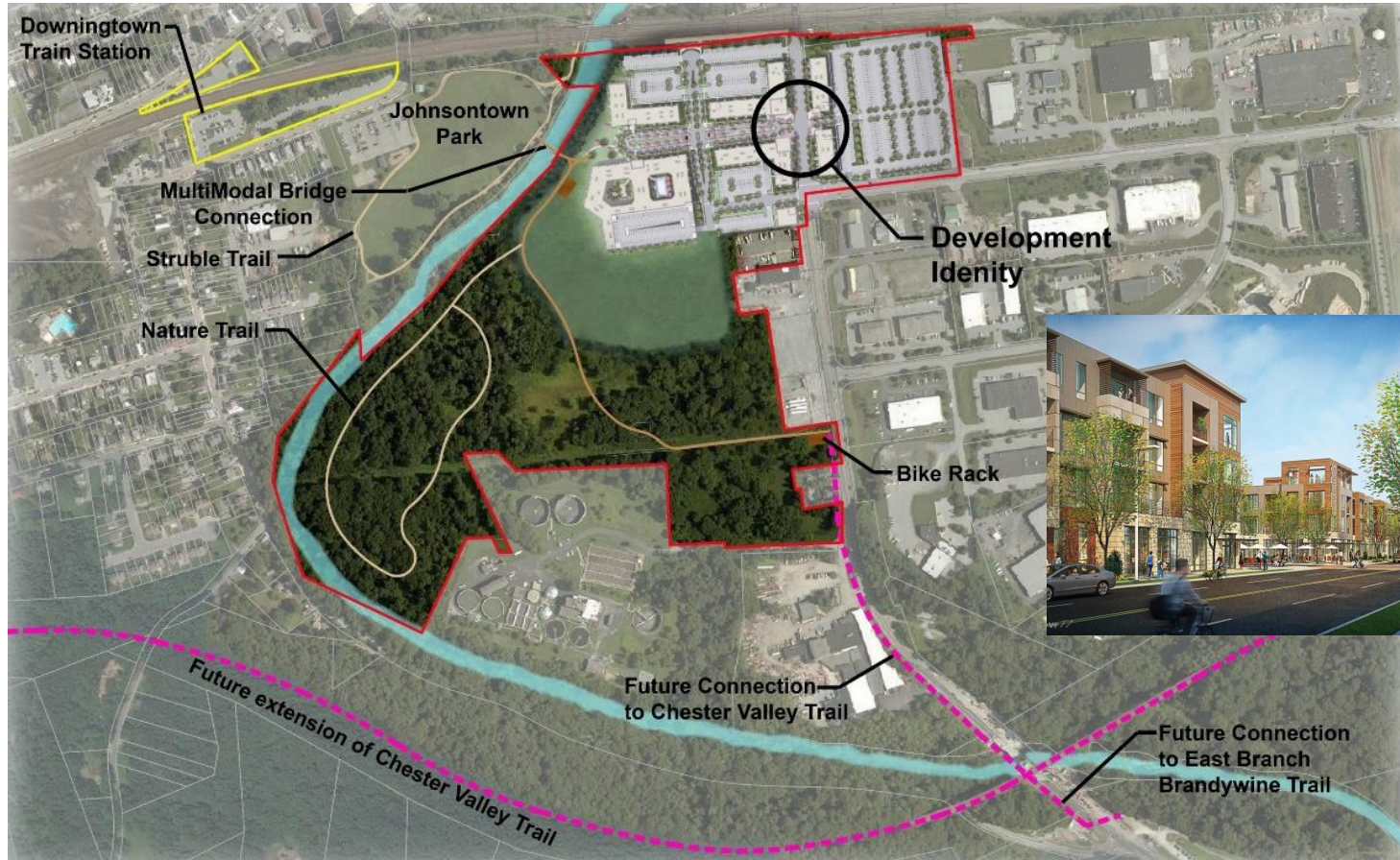
Regional Perspective: West Whiteland Township

Exton Crossroads Redevelopment

- **Exton Major Commercial Hub in Chester County:** Suburban Center Designation – CCPC Landscapes3 & DVRPC Long Range Plan
- **2010 Census:** 18,274 (Pop.) & 7,500 (HU)
- **Population Projections 2045:**
WWT - 22,698 (23% increase)
County - 662,283 (28.4 % increase)
- **Transit Service:** 2 Regional Train Stations (both Amtrak and SEPTA) & 3 Bus Routes



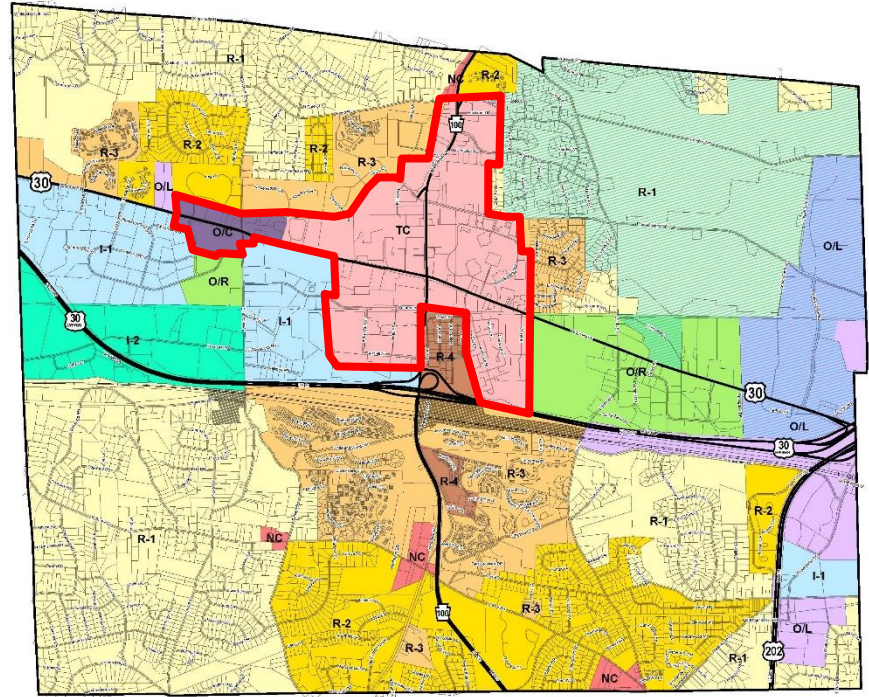
Regional Perspective: River Station



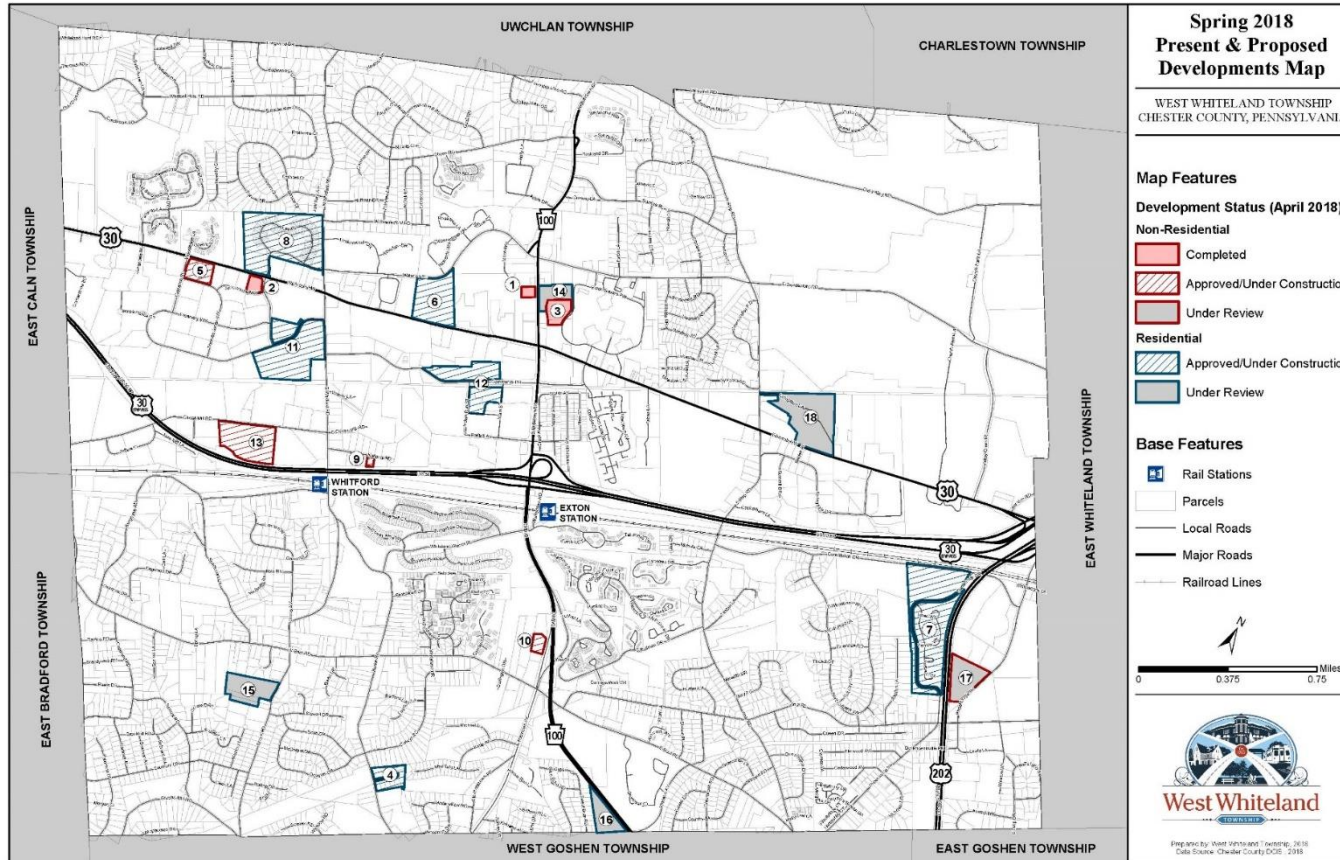
Preparation for Development

Exton Crossroads Redevelopment

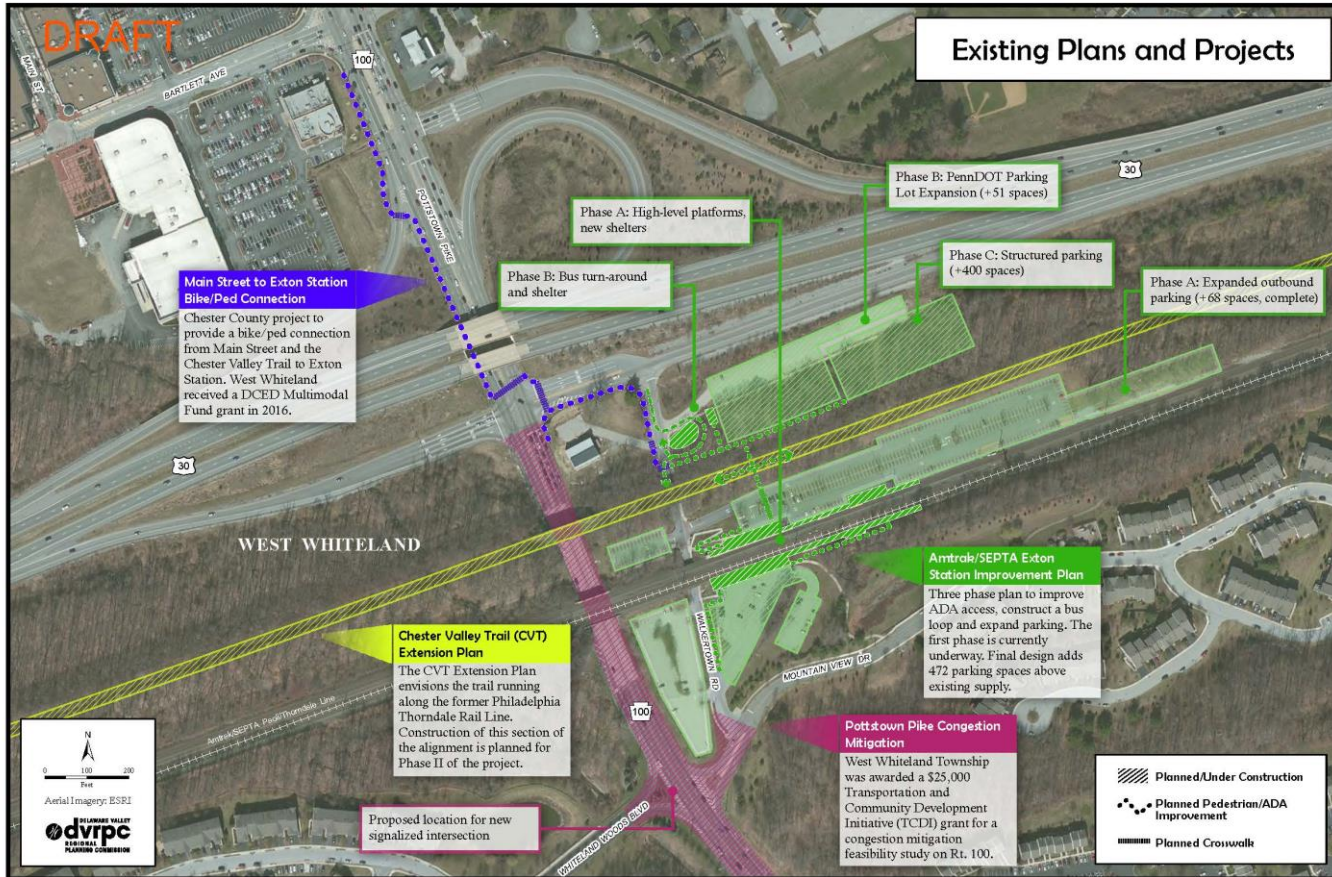
- **Development inactivity – PLAN**
(Updated Ordinances & Plans)
- **Facilitate review process for good plans**
- **Created a Brand: “Exton Crossroads”**
- **Improve transportation options**



Existing Township Land Development



Transportation Improvements/Plan Implementation



Exton Crossroads: Big Picture

