

## WHAT ARE THEY BUILDING NOW?

**Project Name:** Whitford Property Inc. (Wawa)

**Address:** 401 & 403 W. LINCOLN HWY.

### Project Description:

This project proposes the construction of a 5,585 sq.ft. Wawa convenience store and Gas Station at the northwest corner of the intersection of W. Lincoln Hwy. and N. Whitford Rd. The project will also include sidewalks at both Lincoln Hwy. and Whitford Rd. frontages and additional access from Waterloo Blvd.

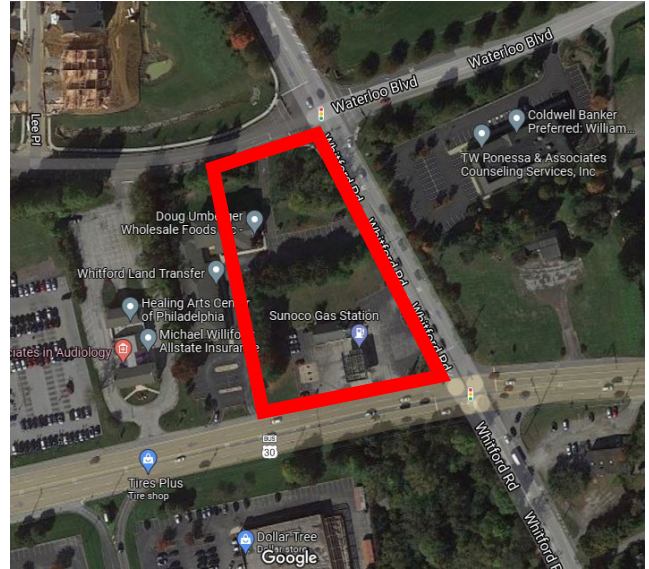
[Whitford Property CU Plan Link](#)

### Zoning:

[O/C - Office/Commercial District Regulations](#)

### Planning Review Process:

- **Zoning Variances:** In June 2021 the Zoning Hearing Board (ZHB) granted the following variances for the Wawa:
  - The Wawa freestanding sign height (20 ft)
  - The Wawa freestanding sign area (47 sq.ft.)
  - The increase of a non-conforming use
 The ZHB denied the increase of the area for the wall mounted signage.
- **Conditional Use (CU):** Plans were submitted for CU in August 2021 and have not yet been reviewed by the Planning Commission. The Board of Supervisors has not reviewed the Plans yet and will hold a public hearing regarding the project once a recommendation with conditions has been given by the Planning Commission. The Hearing will be posted in the coming months.
- **Land Development (LD):** This review phase has not yet started and will await the conclusion of the CU process before LD can be submitted.



**Location:** Northwest corner of Lincoln Hwy. and Whitford Rd. Intersection

### Meeting Dates:

- **Planning Commission Meeting**  
March 15, 2022 (Recommendation) [Minutes](#)
- **Board of Supervisors Meeting**  
April 27, 2022 CU Hearing [\(Meeting Link\)](#)

### Status:

- Under Review