

WEST WHITELAND TOWNSHIP DEVELOPMENT OPEN HOUSE

APRIL 9, 2019



MEETING OUTLINE

- TOWNSHIP DEVELOPMENT HISTORY AND CONTEXT:
PLANNING PHILOSOPHY FOR EXTON CROSSROADS DEVELOPMENT AND REDEVELOPMENT WITHIN THE TOWNSHIP
- PRESENTATION OF THE TOWNSHIP'S BICYCLE AND PEDESTRIAN PLAN:
PLANNING PROCESS, ANALYSIS AND PLAN RECOMMENDATIONS
- PRESENTATION OF THE TOWNSHIP'S CAPITAL IMPROVEMENTS PLAN:
REVIEW OF THE PLAN AND TOWNSHIP PROJECTS UNDERWAY
- QUESTIONS AND ANSWERS SESSION

TOWNSHIP DEVELOPMENT PHILOSOPHY

REGIONAL PERSPECTIVE: WEST WHITELAND TOWNSHIP

WEST WHITELAND TOWNSHIP - EXTON

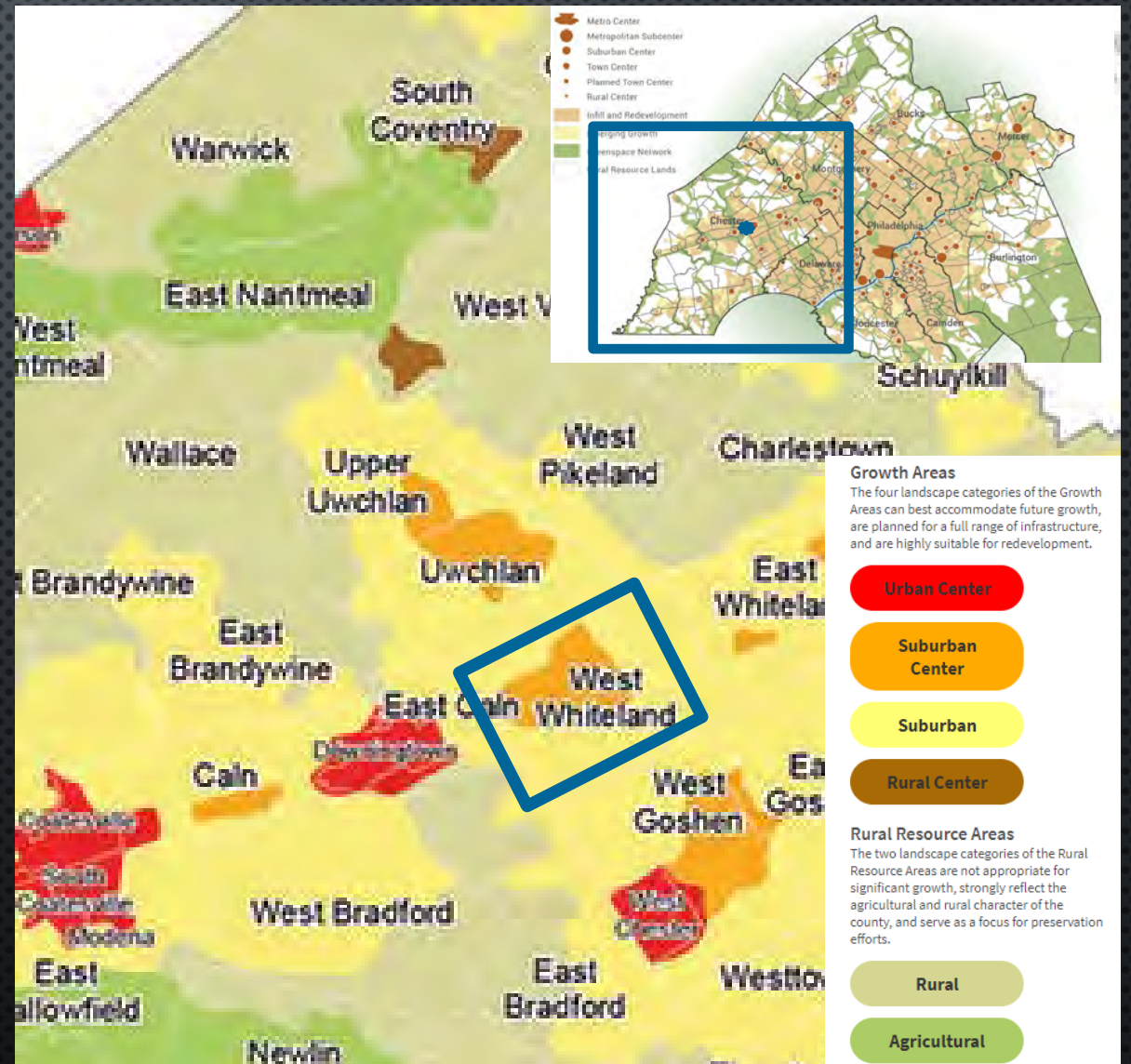
- **EXTON MAJOR COMMERCIAL HUB
IN CHESTER COUNTY:**

GROWTH AREA - SUBURBAN &
SUBURBAN CENTER DESIGNATIONS -
CCPC LANDSCAPES3 & DVRPC LONG
RANGE PLAN

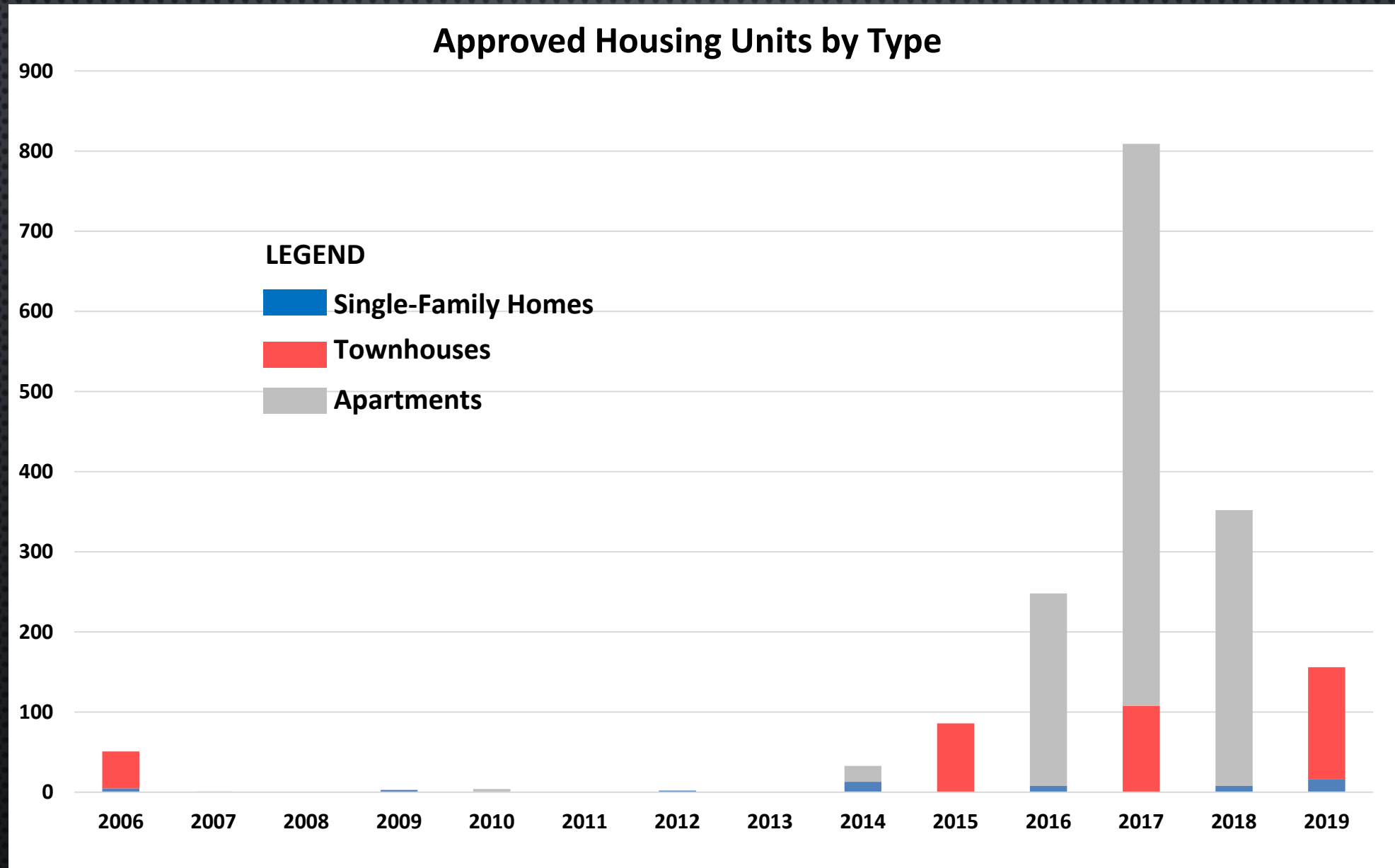
- **POPULATION PROJECTIONS 2045:**

WWT - 22,698 (23% INCREASE)

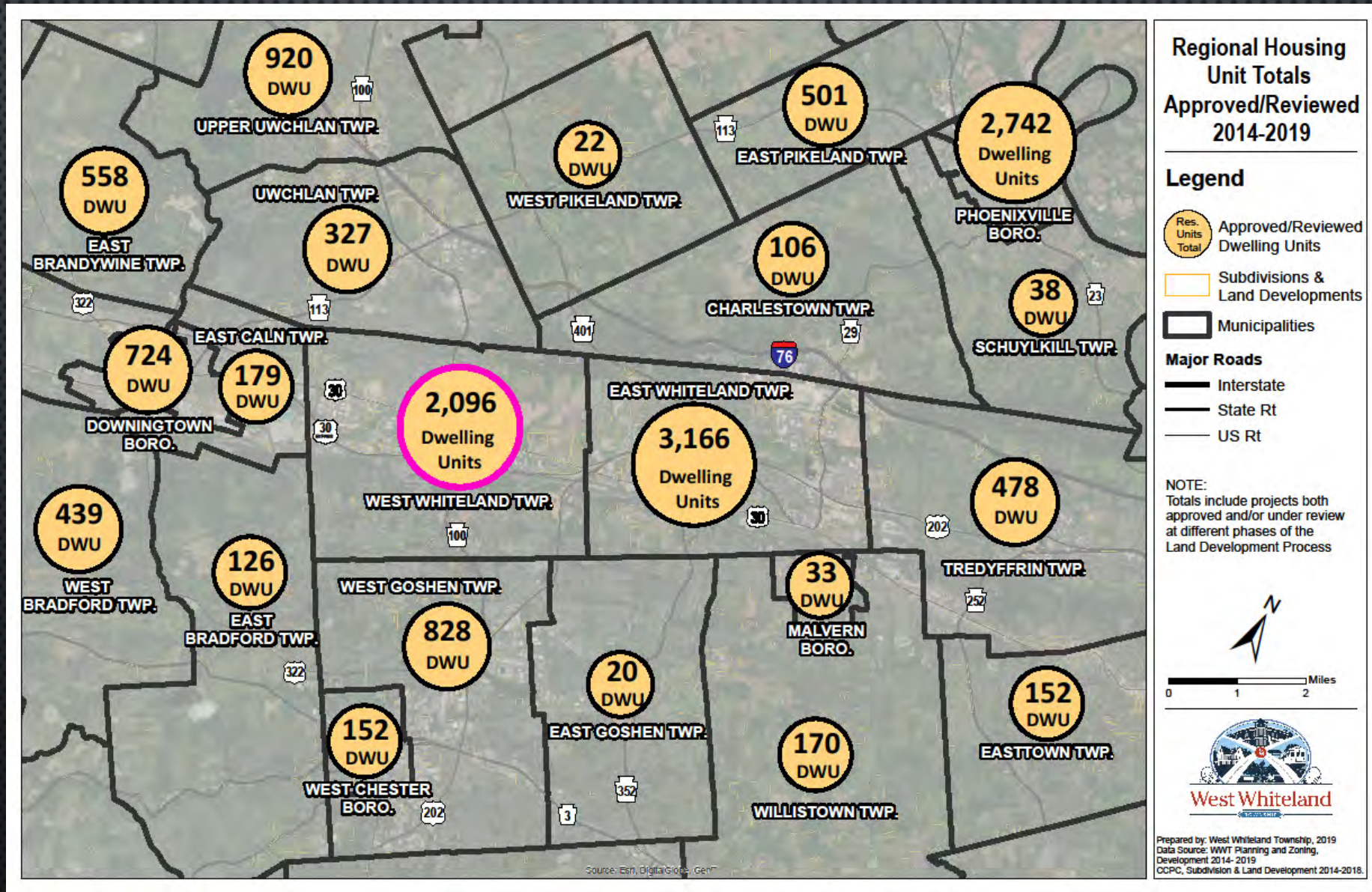
COUNTY - 662,283 (28% INCREASE)



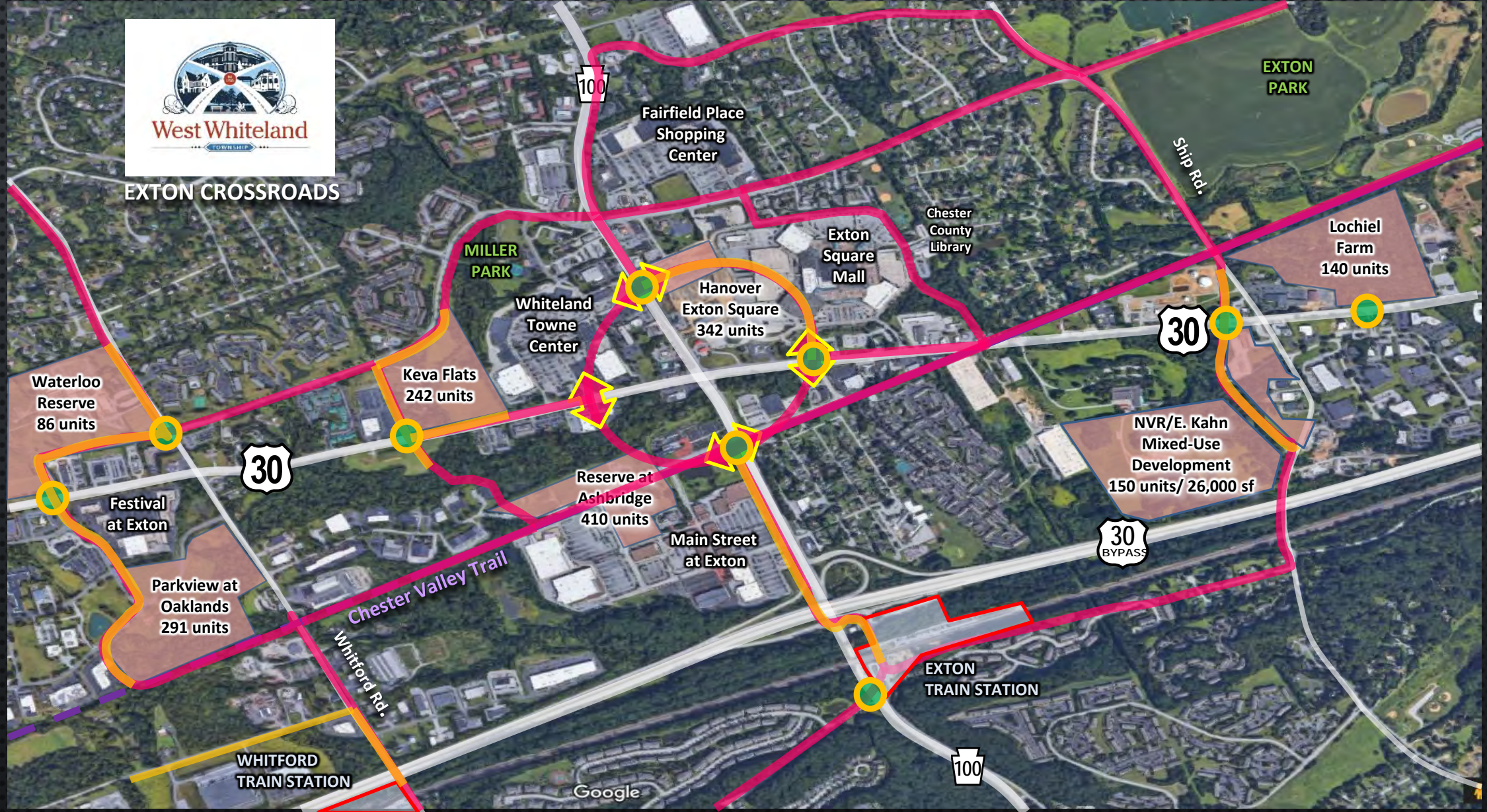
APPROVED HOUSING UNITS IN THE TOWNSHIP



REGIONAL RESIDENTIAL DEVELOPMENT



EXTON CROSSROADS: BIG PICTURE



TOWNSHIP BICYCLE AND PEDESTRIAN PLAN

PURPOSE OF THE PLAN

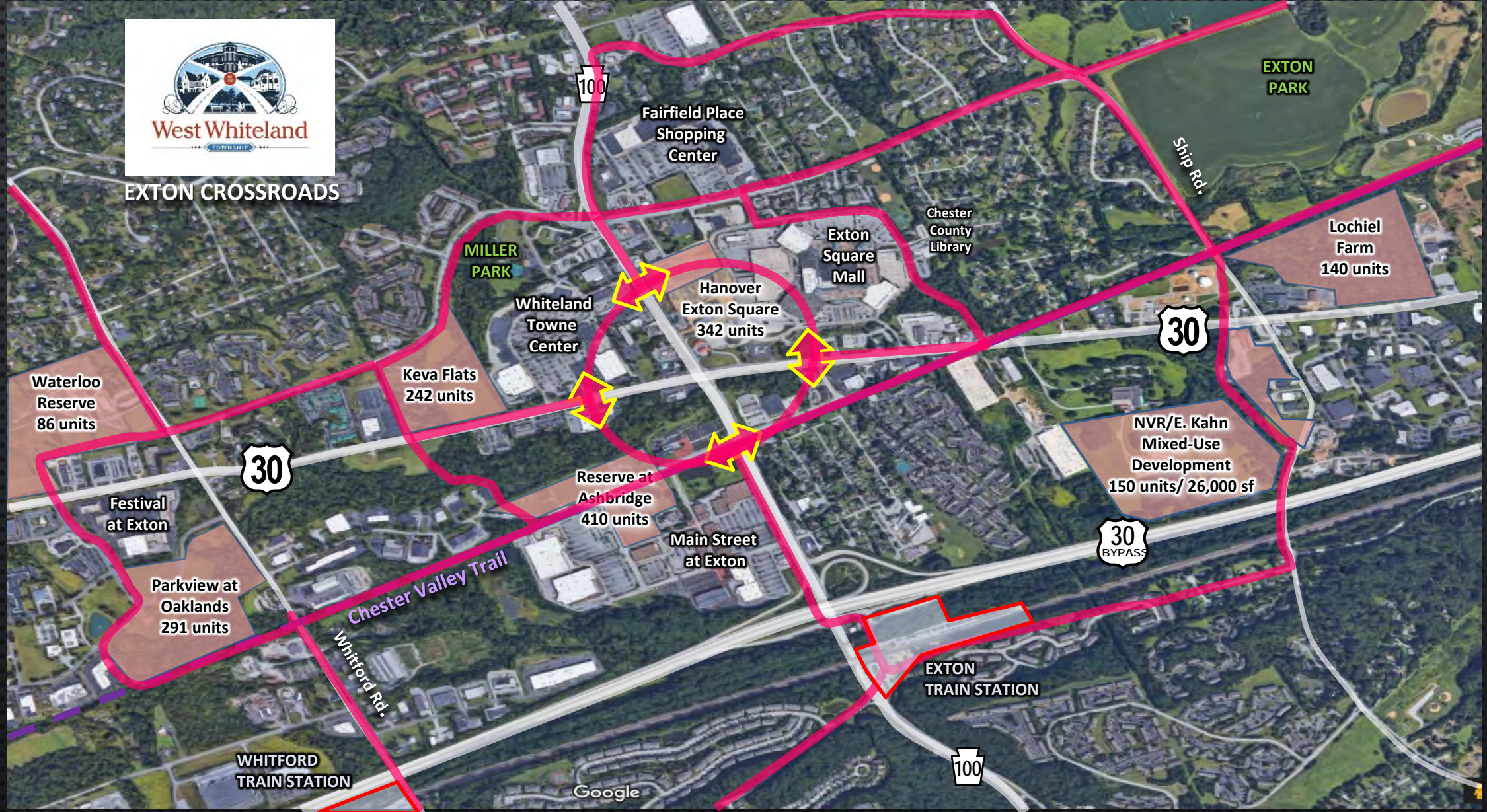
IDENTIFY PRIORITY BIKE/PEDESTRIAN PROJECTS WITHIN THE TOWNSHIP:

- TO CREATE/COMPLETE A COMPREHENSIVE NON-MOTORIZED CIRCULATION NETWORK
- TO PROVIDE ALTERNATIVE TRAVEL OPTIONS TO PLACES OF INTEREST WITHIN THE TOWNSHIP AND EXTON CROSSROADS FOR LOCAL RESIDENTS, BUSINESSES, COMMUTERS, AND FOR RECREATION.

PROJECTS IDENTIFIED WILL BE IMPLEMENTED BY:

- TOWNSHIP'S PLANNING COMMISSION THROUGH THE LAND DEVELOPMENT PROCESS
- TOWNSHIP'S CAPITAL IMPROVEMENTS PLAN AND/OR
- OTHER AGENCIES/ORGANIZATIONS

EXTON CROSSROADS: PEDESTRIAN CIRCULATION



EXISTING BIKE/PED. NETWORK BY THE NUMBERS

- TRAILS:

- EXISTING: 14 MILES
- DESIGN/CONSTRUCTION: 2 MILES
- PROPOSED: 10 MILES

- SIDEWALKS:

- EXISTING: 51 MILES
- PROPOSED: 6 MILES (DOES NOT INCLUDE ALL RECENTLY APPROVED DEVELOPMENTS)



CVT @ Valley Creek Blvd., CCPC 2017

PLAN PROJECT PRIORITIES

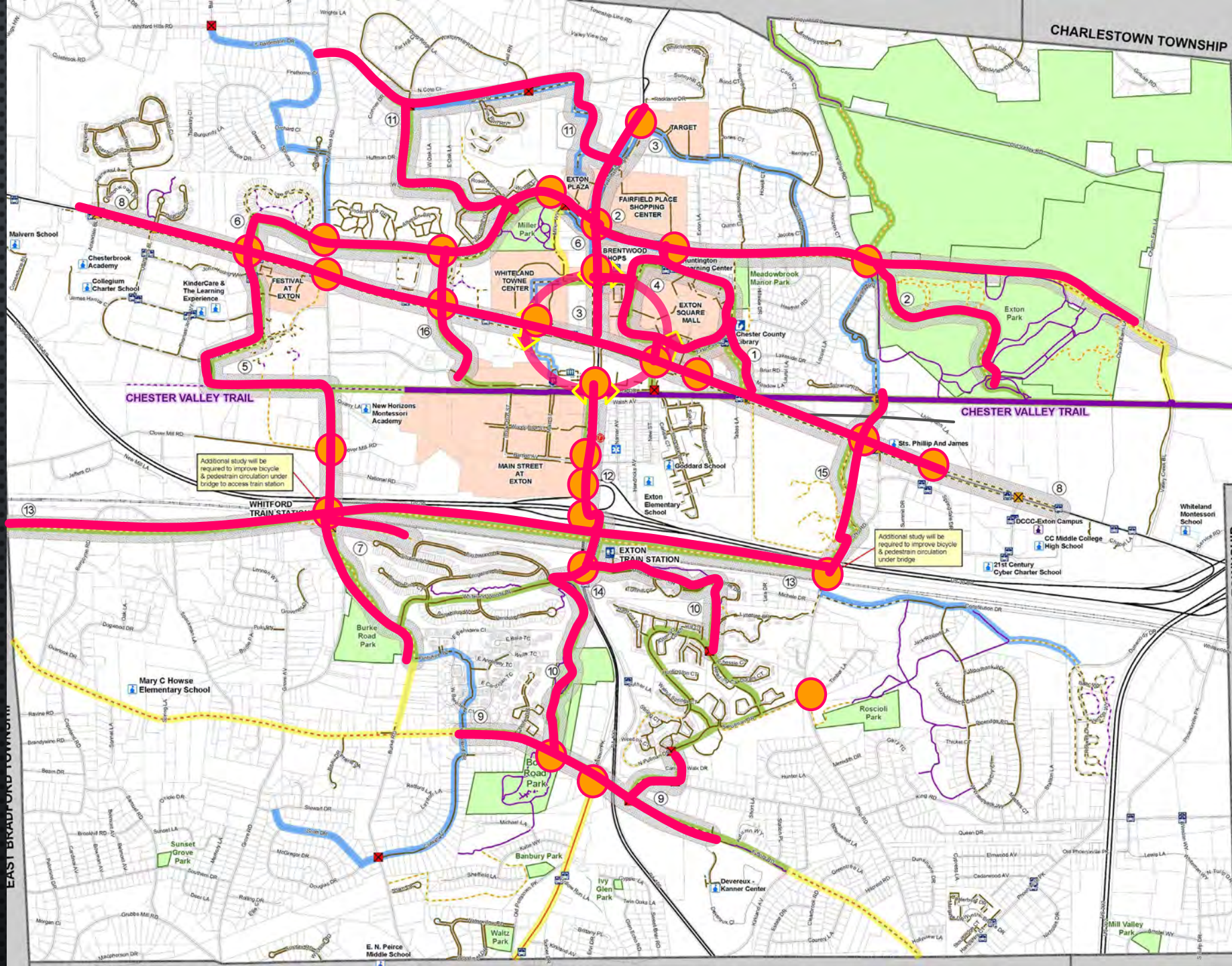
- PROJECTS IDENTIFIED CONSIST OF THE FOLLOWING:

- TRAILS
- SIDEWALKS
- SIGNED & MARKED BIKE ROUTES
- INTERSECTION IMPROVEMENTS

- FEASIBILITY ANALYSIS CONDUCTED:

- EXISTING CONDITIONS
- PROJECT COMPONENTS/IMPROVEMENTS
- OPPORTUNITIES
- CONSTRAINTS
- ACQUISITION/COORDINATION





EAST BRADFORD TOWNSHIP

REQUESTED NEW CONNECTIONS BY THE NUMBERS

- **PLAN TRAILS:**

- PROPOSED: **4 MILES**

- **PLAN SIDEWALKS:**

- PROPOSED: **10 MILES**

- **PLAN BIKE ROUTES:**

- SIGNED/MARKED BIKE ROUTE: **37 MILES**

- **PLAN ROAD CROSSINGS:**

- ADD CROSSWALKS/PED. SIGNALS: **24**
- UPDATE CROSSWALKS/PED. SIGNALS: **16**

- **NETWORK WHEN COMPLETED:**

- TRAILS TOTAL: **30 MILES***
- SIDEWALKS TOTAL: **67 MILES***
- SIGNED BIKE ROUTES TOTAL: **37 MILES**
- ROAD CROSSINGS WITH CROSSWALKS/PED SIGNALS: **40**

* Does not include recently approved developments

Draft numbers subject to change

DRAFT PLAN RECOMMENDATIONS

16 INFRASTRUCTURE IMPROVEMENT PROJECTS/5 PLANNING PROJECTS

- UPDATE TOWNSHIP'S OFFICIAL MAP
- IDENTIFY PROJECTS TO ADD TO THE TOWNSHIP'S CAPITAL IMPROVEMENTS PLAN
- ESTABLISH WAYFINDING SIGNAGE WITHIN EXTON CROSSROADS
- UPDATE ZONING/SUBDIVISION & LAND DEVELOPMENT ORDINANCES
- ADDITIONAL STUDIES: ACTIVE RAIL UNDERPASSES (WHITFORD RD. AND SHIP RD.)

TOWNSHIP CAPITAL IMPROVEMENTS PLAN & PROJECTS

PLANNING LEADS TO IMPROVEMENTS



TOWNSHIP CAPITAL IMPROVEMENTS PLAN

TRAFFIC PLANNING



AND DESIGN, INC.

Capital Improvements Plan

West Whiteland Township
Chester County, PA

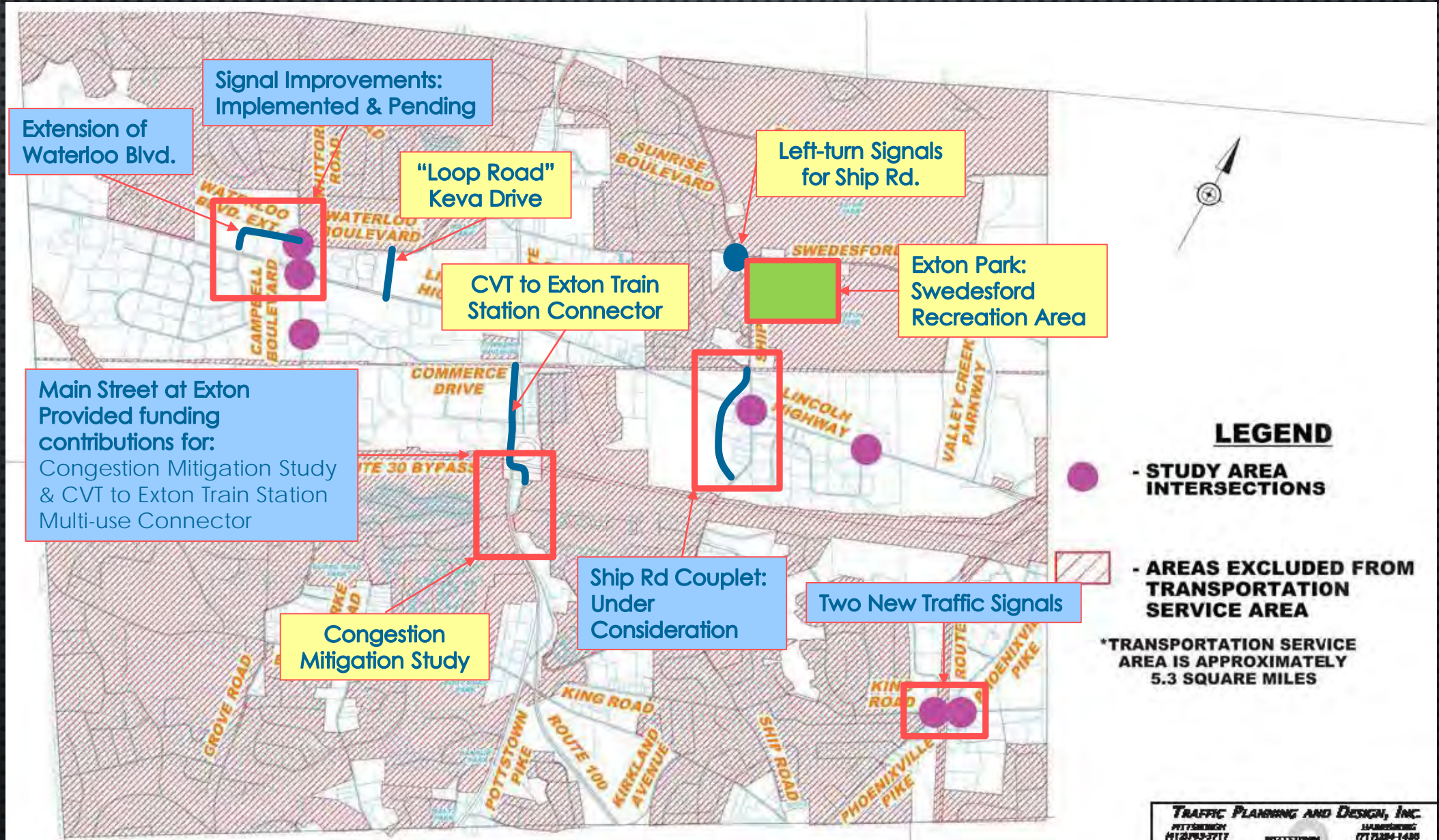
September, 2015
TPD# WWT-00158



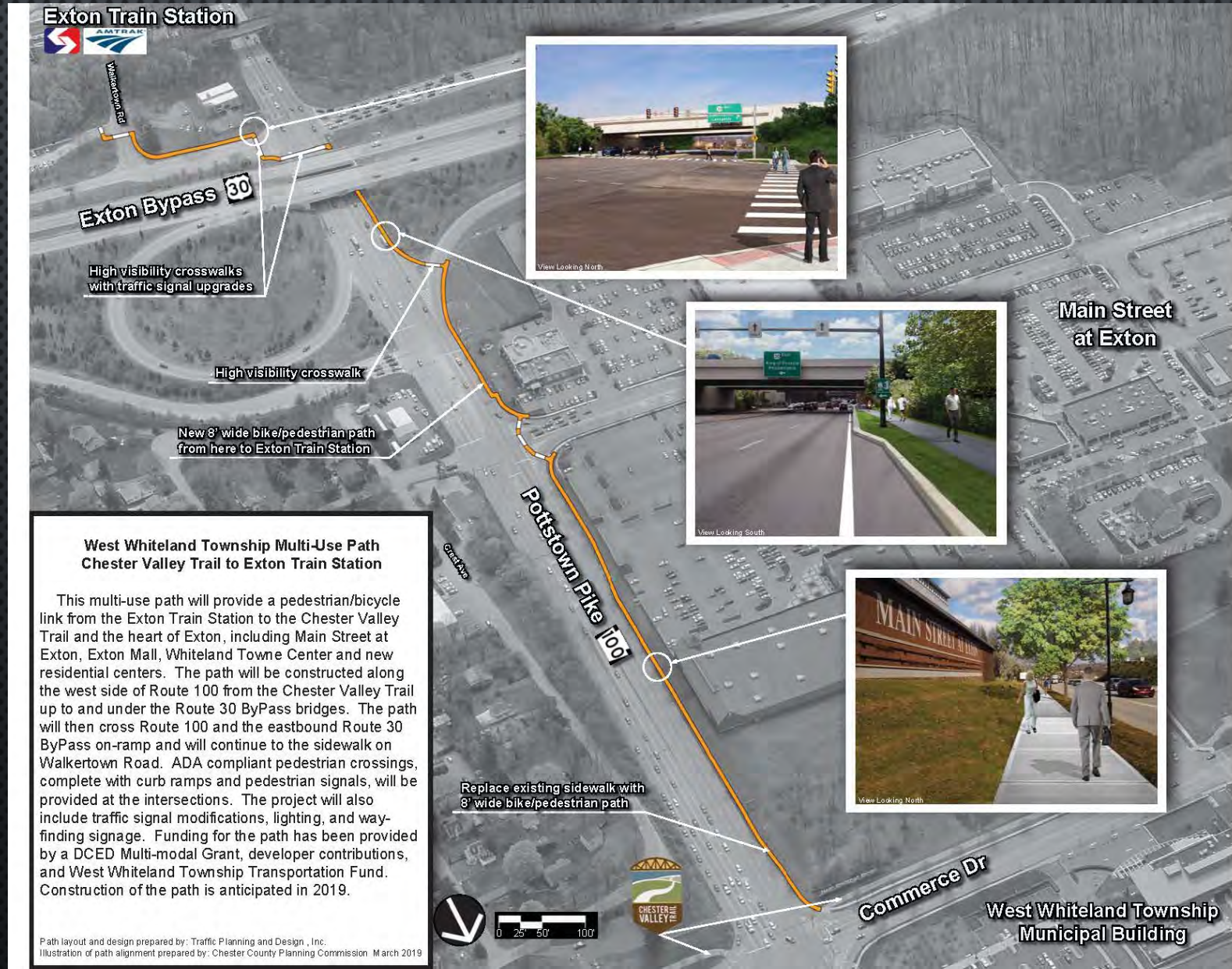
Adopted November 24, 2015
Resolution No. 2015-50

2500 E. High Street | Suite 650 | Pottstown, PA | 19464 | 610.326.3100 | TPD@TrafficPD.com

TRANSPORTATION IMPROVEMENT PROJECTS



CHESTER VALLEY TRAIL TO EXTON TRAIN STATION



Exton Train Station



Exton Bypass 30

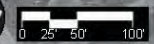
High visibility crosswalks with traffic signal upgrades

High visibility crosswalk

New 8' wide bike/pedestrian path from here to Exton Train Station

**West Whiteland Township Multi-Use Path
Chester Valley Trail to Exton Train Station**

This multi-use path will provide a pedestrian/bicycle link from the Exton Train Station to the Chester Valley Trail and the heart of Exton, including Main Street at Exton, Exton Mall, Whiteland Towne Center and new residential centers. The path will be constructed along the west side of Route 100 from the Chester Valley Trail up to and under the Route 30 ByPass bridges. The path will then cross Route 100 and the eastbound Route 30 ByPass on-ramp and will continue to the sidewalk on Walkertown Road. ADA compliant pedestrian crossings, complete with curb ramps and pedestrian signals, will be provided at the intersections. The project will also include traffic signal modifications, lighting, and way-finding signage. Funding for the path has been provided by a DCED Multi-modal Grant, developer contributions, and West Whiteland Township Transportation Fund. Construction of the path is anticipated in 2019.



Path layout and design prepared by: Traffic Planning and Design, Inc.
Illustration of path alignment prepared by: Chester County Planning Commission March 2019

Main Street at Exton



West Whiteland Township Municipal Building

CHESTER VALLEY TRAIL TO EXTON TRAIN STATION



BEFORE IMPROVEMENTS

CHESTER VALLEY TRAIL TO EXTON TRAIN STATION



View Looking North

AFTER IMPROVEMENTS

CHESTER VALLEY TRAIL TO EXTON TRAIN STATION



BEFORE IMPROVEMENTS

CHESTER VALLEY TRAIL TO EXTON TRAIN STATION



View Looking South

AFTER IMPROVEMENTS

CHESTER VALLEY TRAIL TO EXTON TRAIN STATION



BEFORE IMPROVEMENTS

CHESTER VALLEY TRAIL TO EXTON TRAIN STATION



View Looking North

AFTER IMPROVEMENTS

EXTON PARK: SWEDESFORD RECREATION AREA



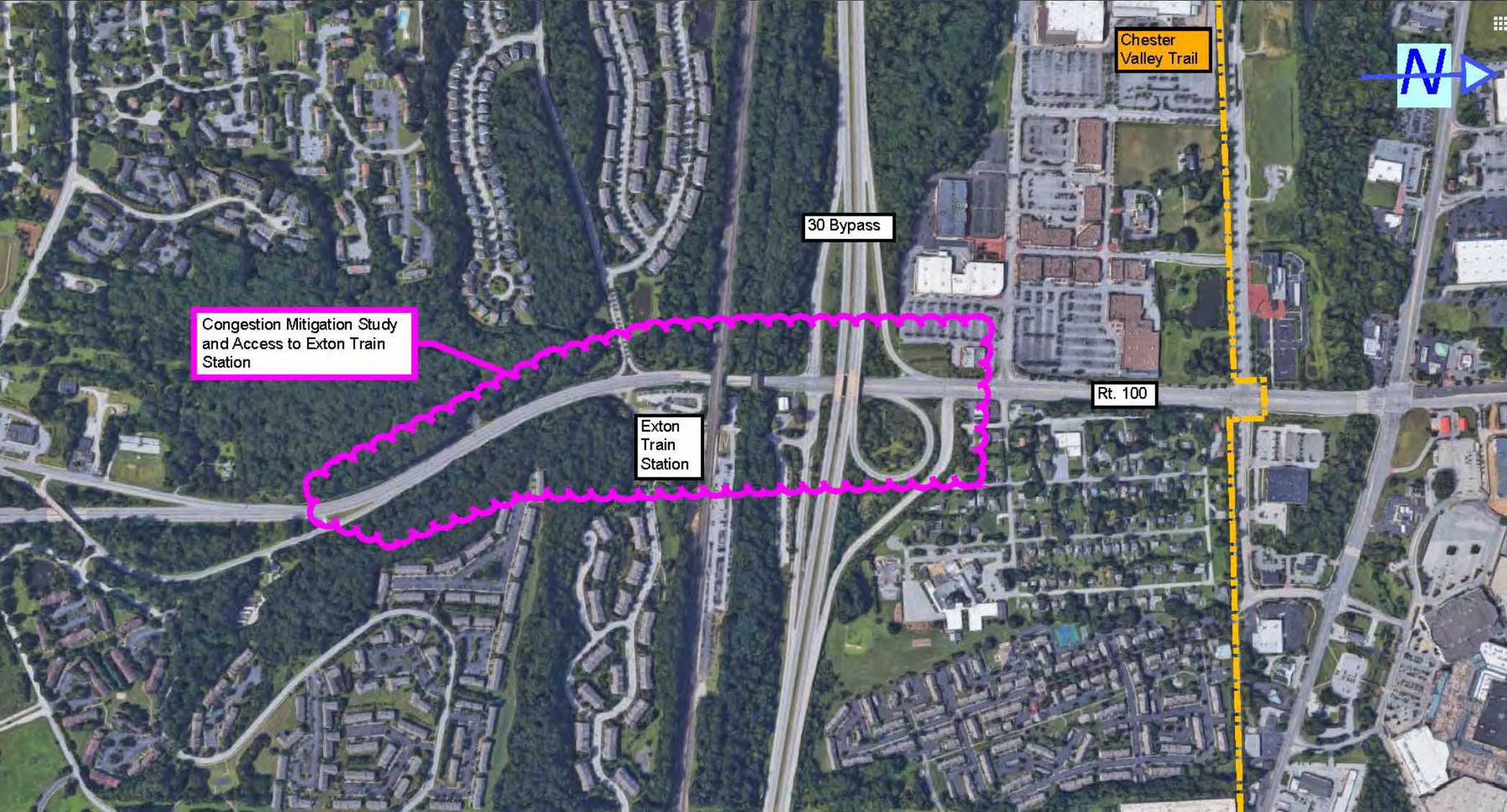
EXTON PARK: SWEDESFORD RECREATION AREA



SHIP RD. LEFT TURN SIGNALS



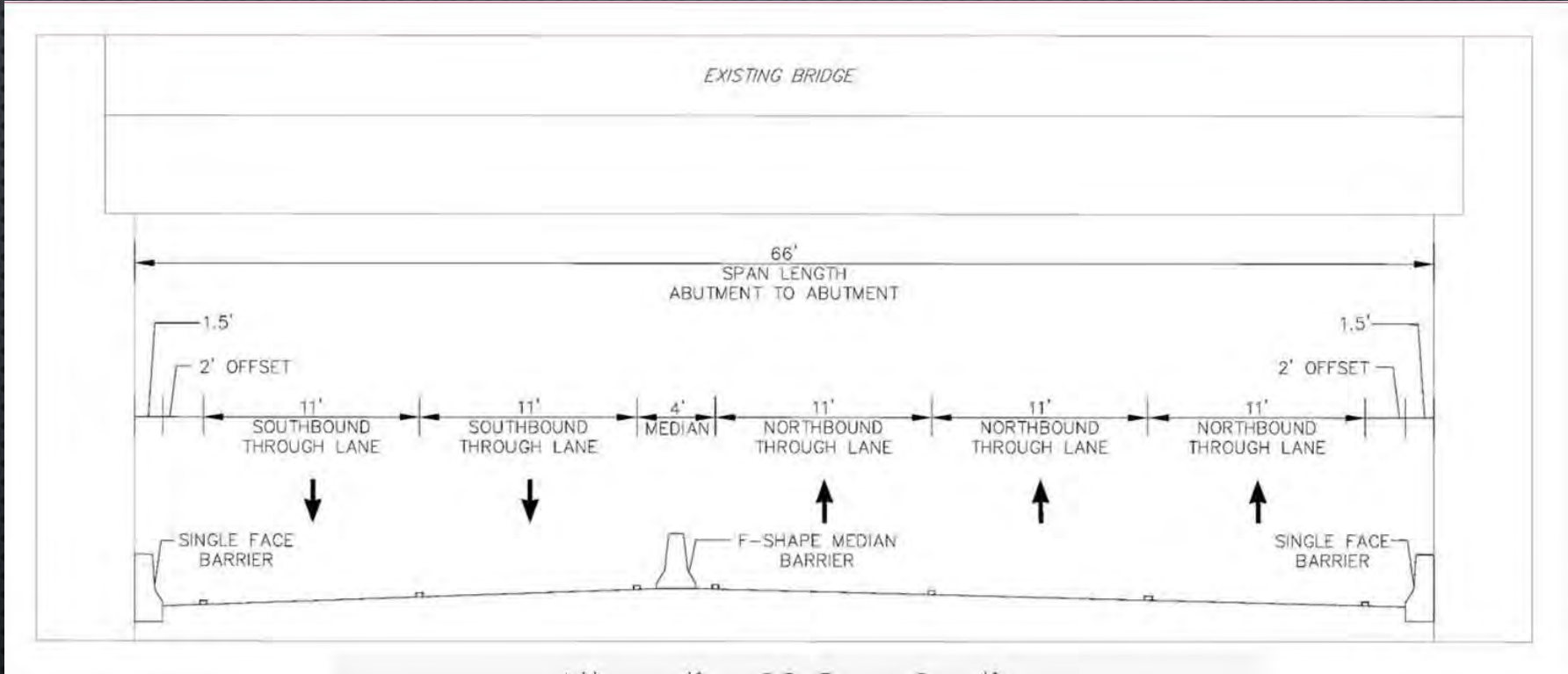
ROUTE 100 CONGESTION MITIGATION STUDY



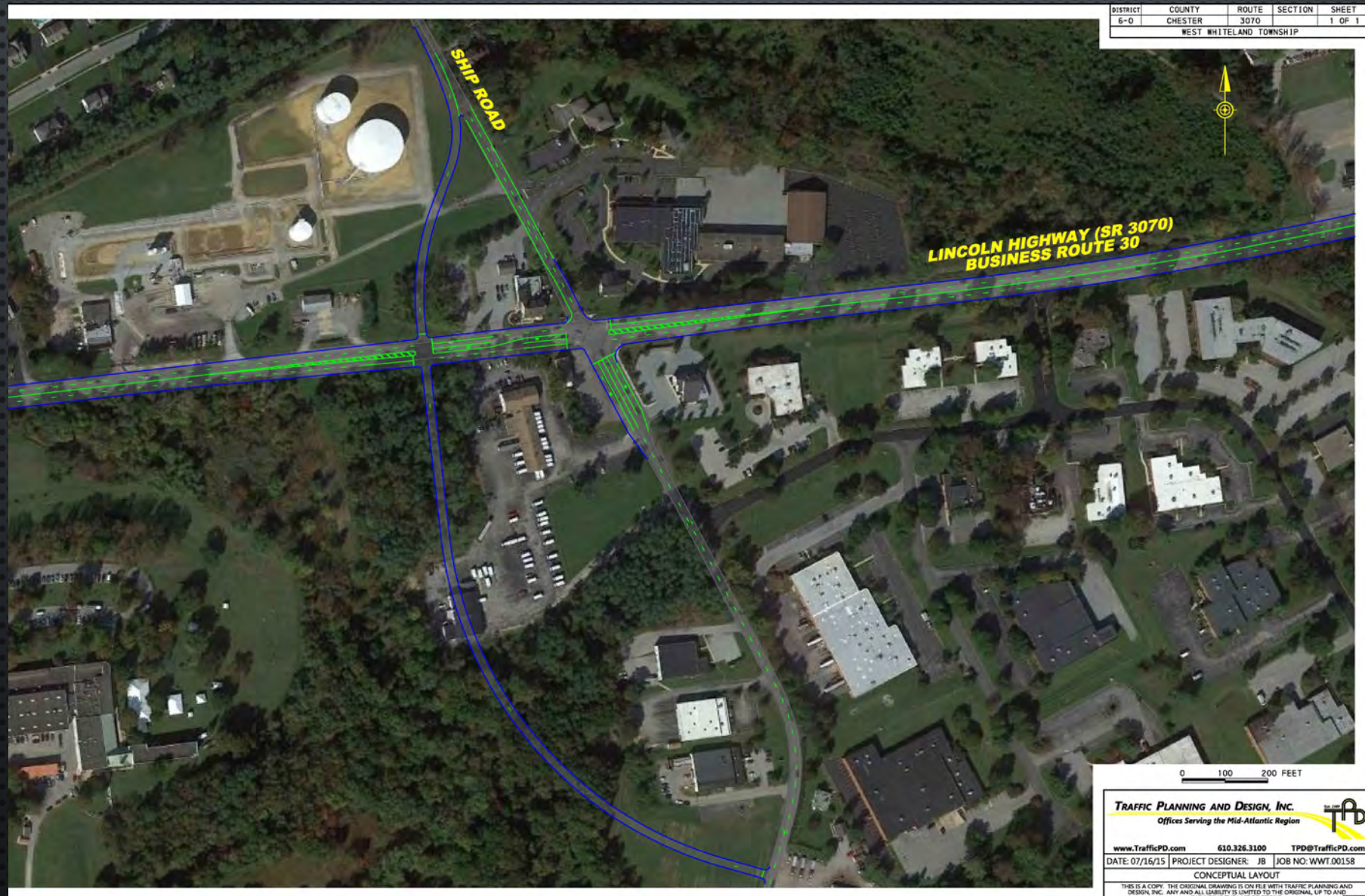
ROUTE 100 CONGESTION MITIGATION STUDY



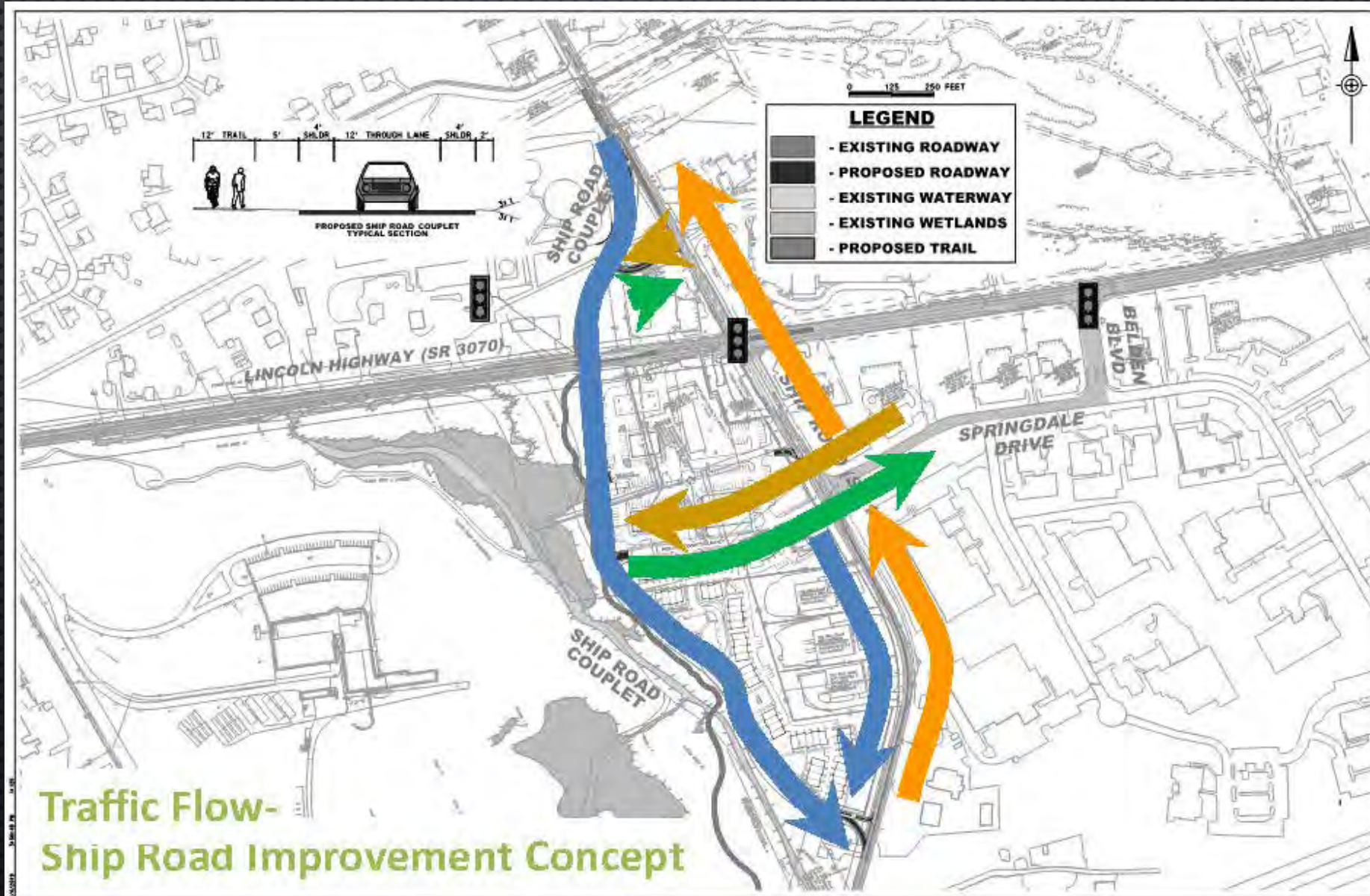
ROUTE 100 CONGESTION MITIGATION STUDY



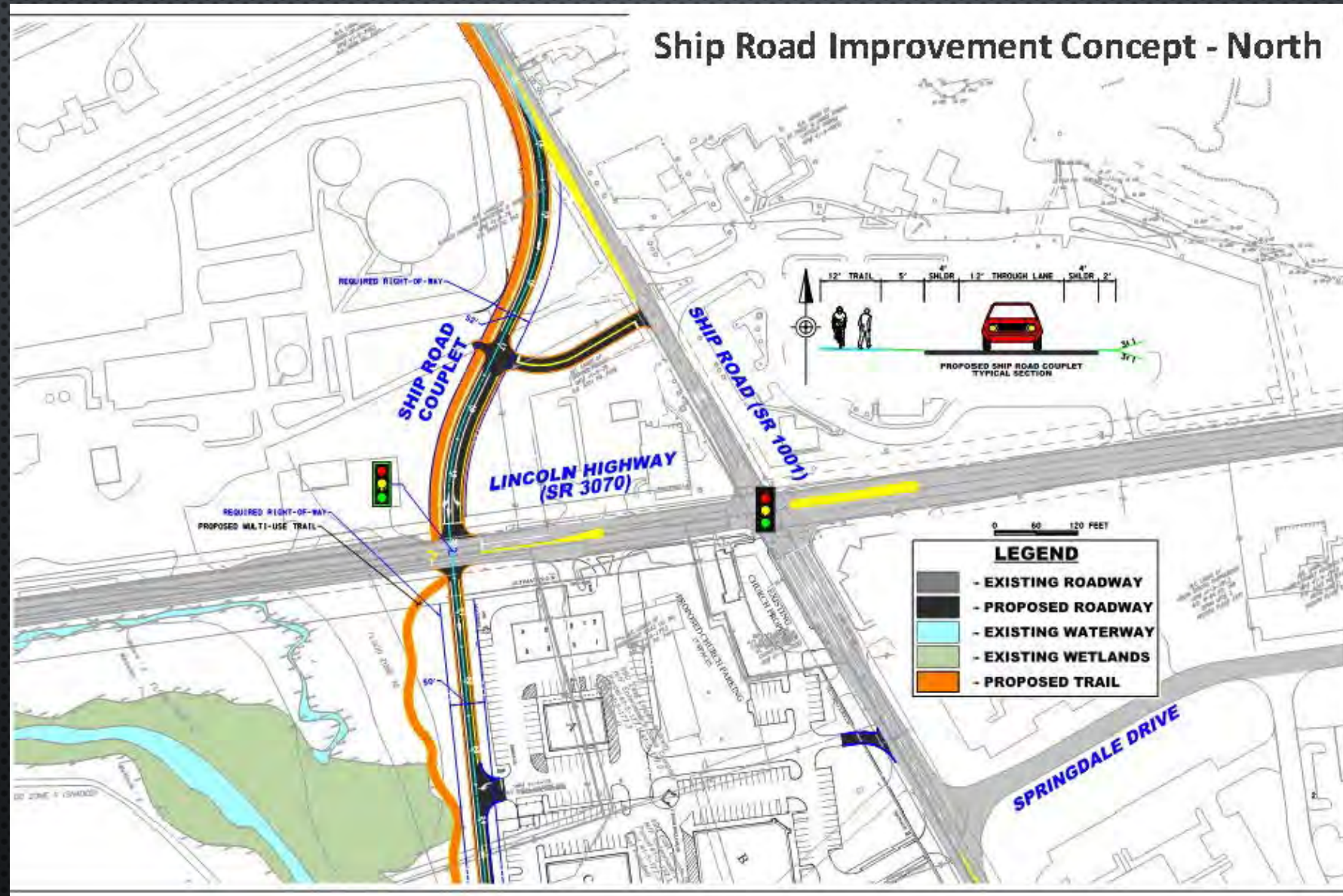
SHIP RD. IMPROVEMENTS



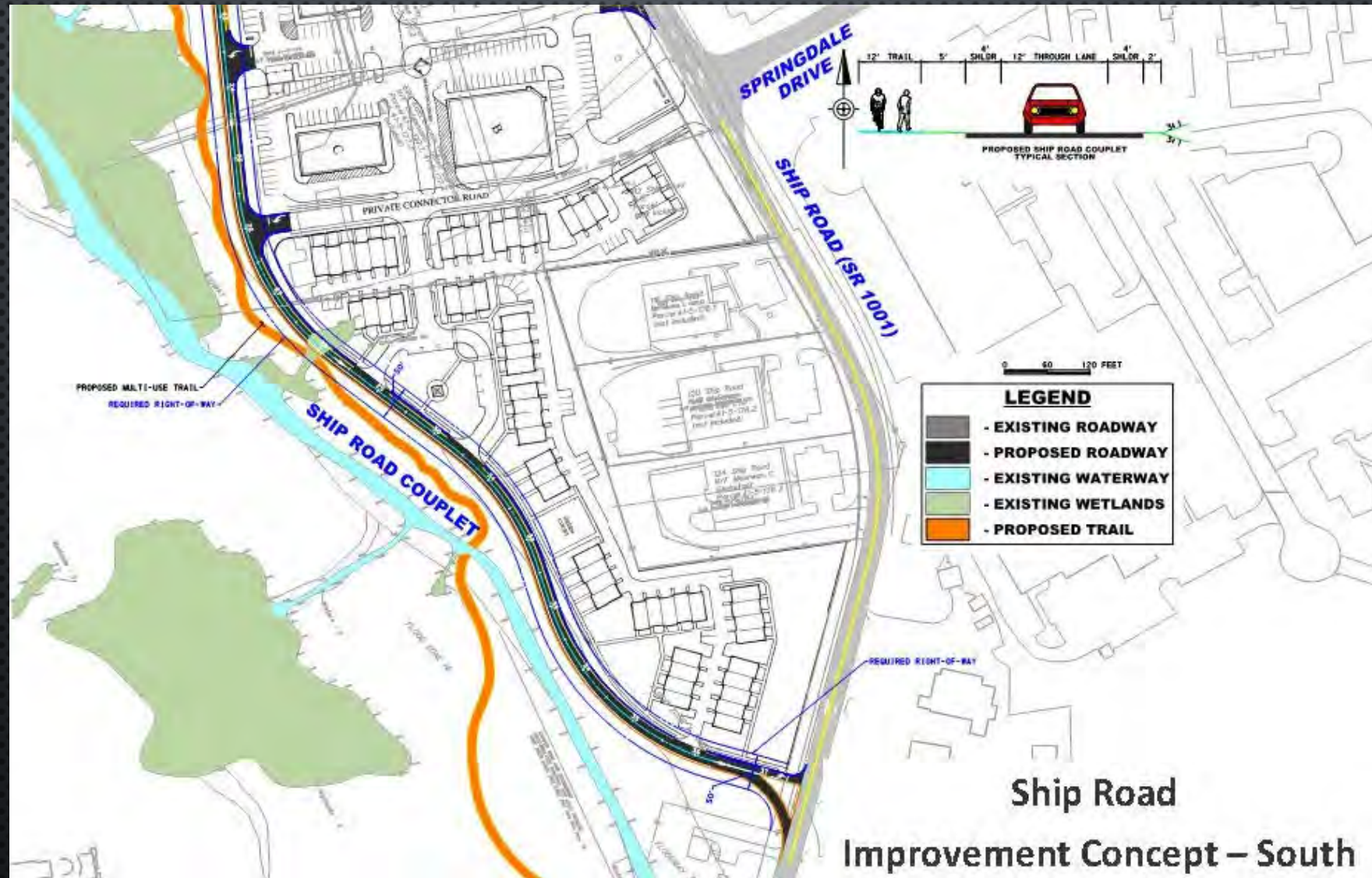
SHIP RD. IMPROVEMENTS



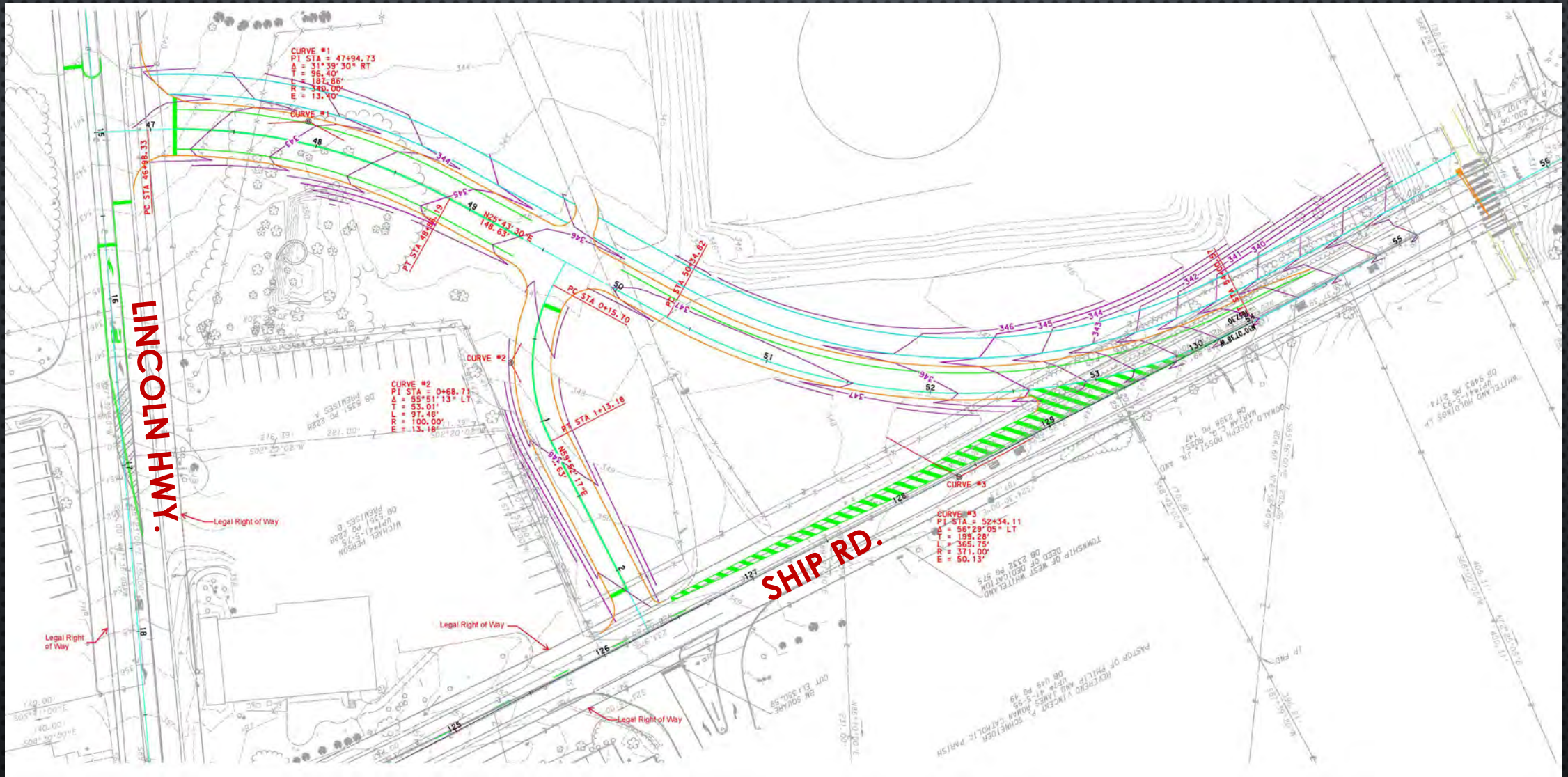
SHIP RD. IMPROVEMENTS



SHIP RD. IMPROVEMENTS



SHIP RD. IMPROVEMENTS



QUESTION & ANSWER SESSION

FOR QUESTIONS AFTER TONIGHT'S OPEN HOUSE PLEASE CONTACT

JOHN WELLER, AICP

DIRECTOR OF PLANNING AND ZONING

EM: JWELLER@WESTWHITELAND.ORG

JUSTIN SMILEY, AICP

TOWNSHIP PLANNER

EM: JSMILEY@WESTWHITELAND.ORG

OR

TED OTTENI, PE

DIRECTOR OF PUBLIC WORKS

EM: TOTTENI@WESTWHITELAND.ORG